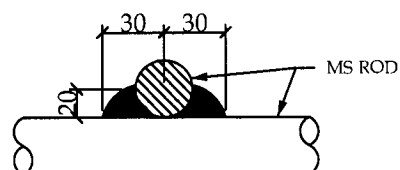
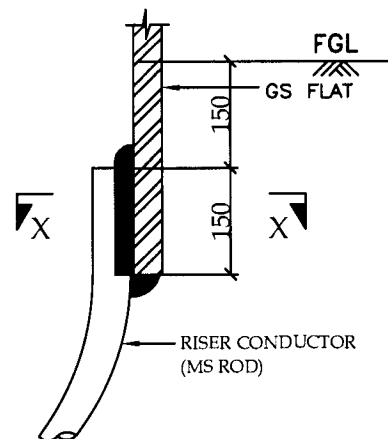
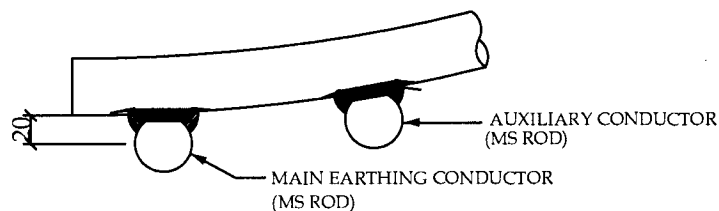
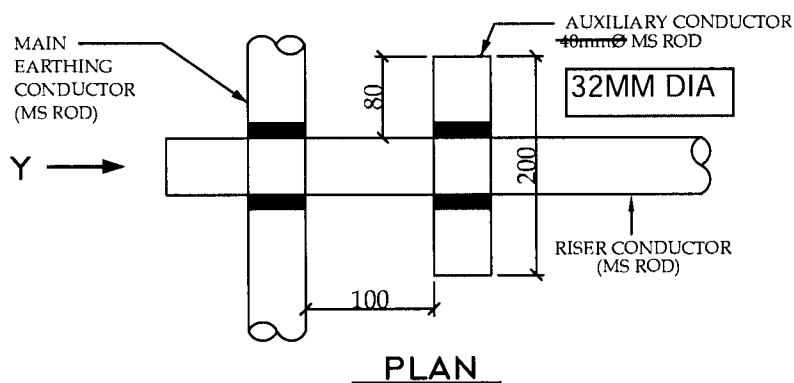


TYPICAL DETAILS OF RISER



RELEASED FOR CONTRUCTION

EXTENSION OF 765/400KV S/S BARA TPS (U.P.)

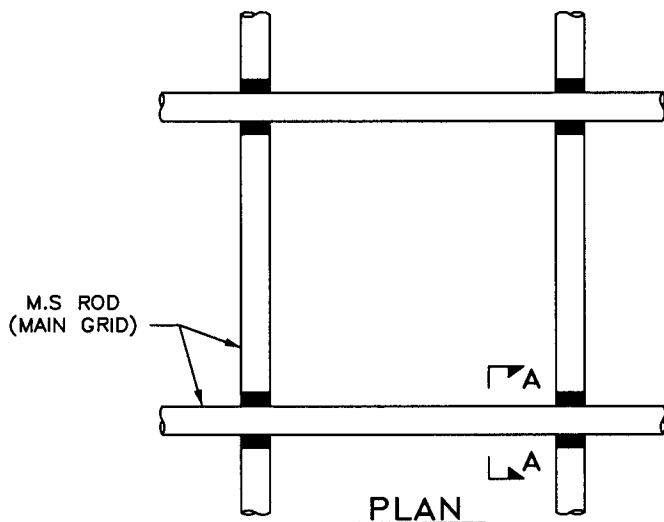
PROJECT :- TECHNICAL SPECIFICATION-  
SWITCHYARD ERECTION

TITLE:- STANDARD EARTHING DETAILS

Drawing No.:  
C/ENG/STD/EARTHINGS/09  
SHEET # 2

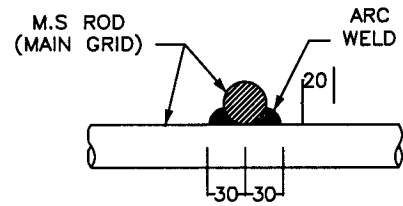
CKD BY PRPD BY Date

*Dr. P. K. Singh*

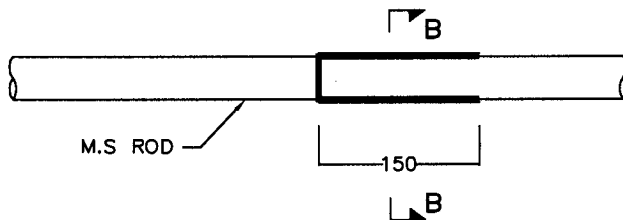


PLAN

DETAIL OF CROSS JOINT

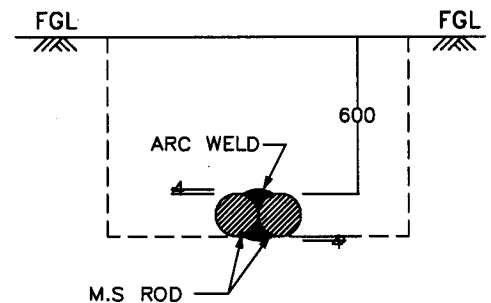


SECTION A - A

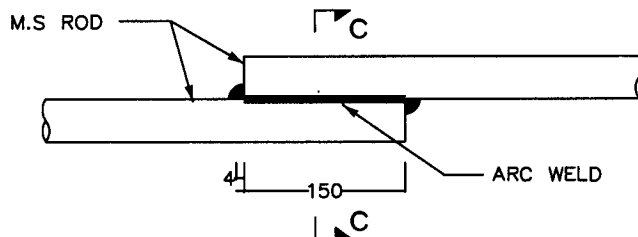


ELEVATION

(CONDUCTORS KEPT ON SIDES)

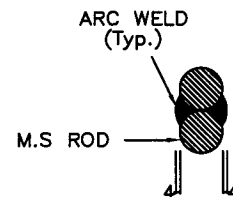


SECTION B - B



ELEVATION

(CONDUCTORS ONE ABOVE THE OTHER)



SECTION C - C

DETAIL OF LAP JOINT

RELEASED FOR CONTRUCTION

*Amal*

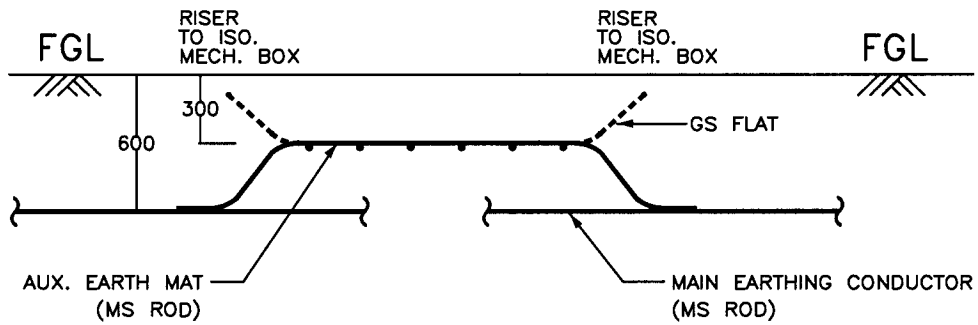
EXTENSION OF 765/400KV S/S BARA TPS (U.P.)

PROJECT :- TECHNICAL SPECIFICATION-  
SWITCHYARD ERECTION

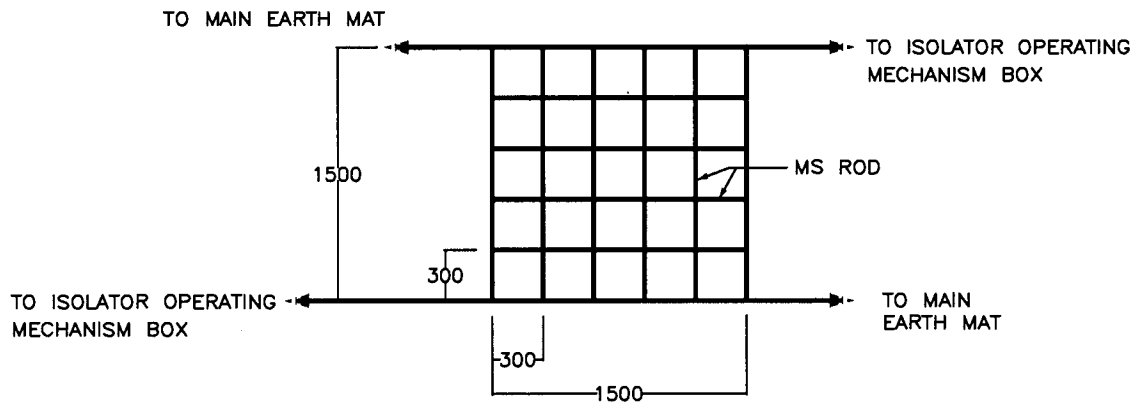
TITLE:- STANDARD EARTHING DETAILS

Drawing No.:  
C/ENG/STD/EARTHINGS/09  
SHEET # 3

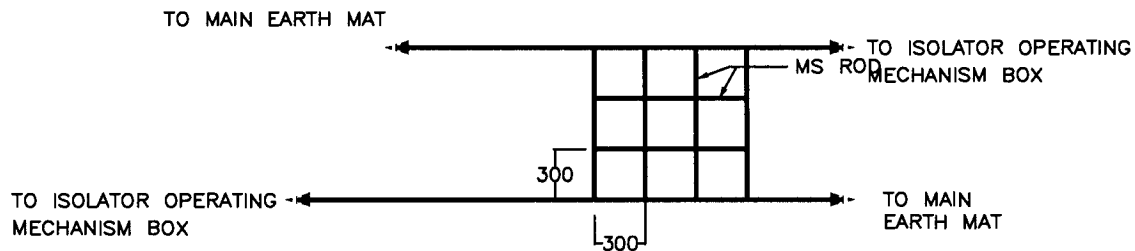
CKD BY PRPD BY Date



ELEVATION



PLAN (For 220kV & above class isolators)



PLAN (For 132kV & below class isolators)

RELEASED FOR CONTRUCTION

*Handwritten signature*

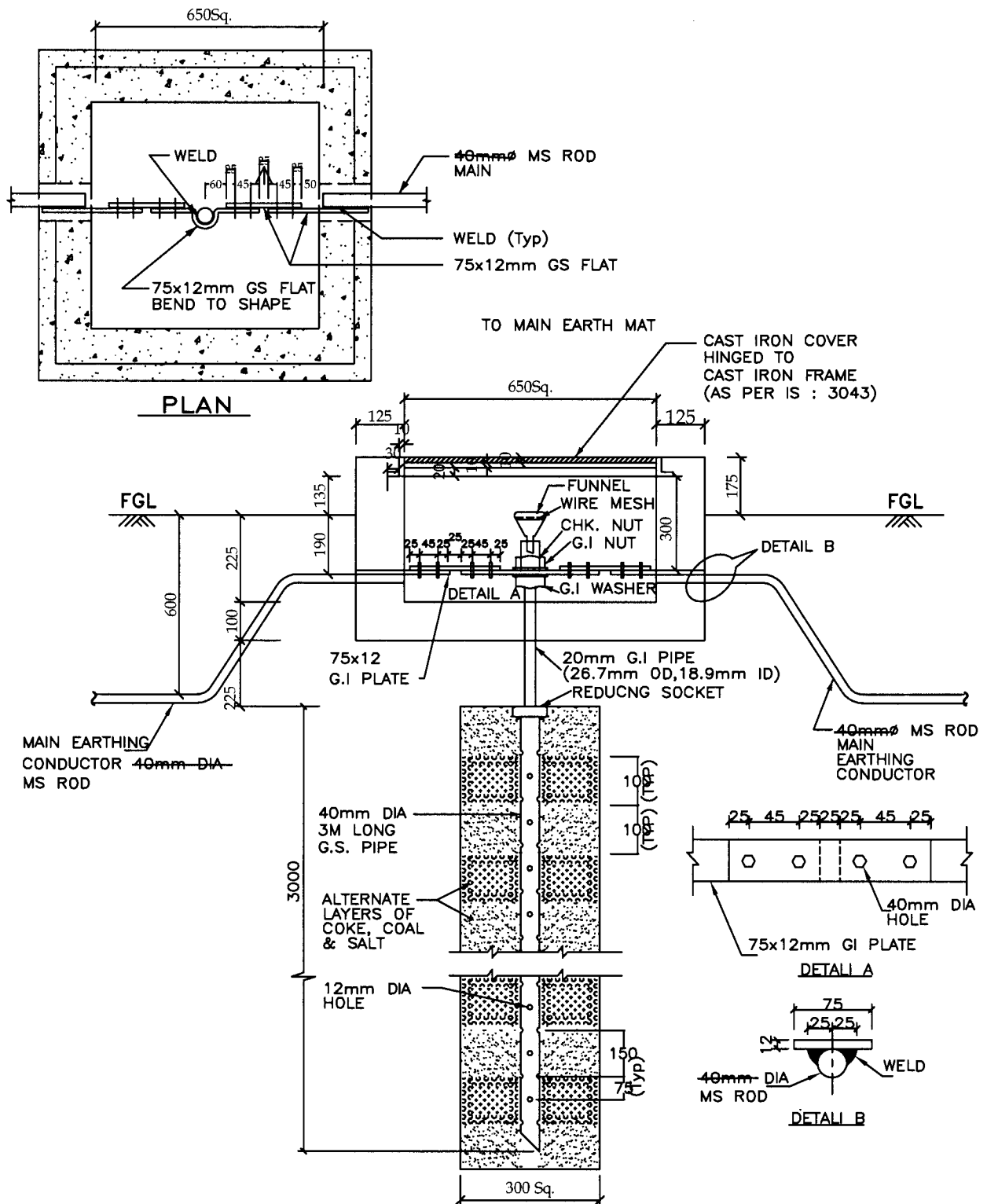
EXTENSION OF 765/400KV S/S BARA TPS (U.P.)

PROJECT :- TECHNICAL SPECIFICATION-  
SWITCHYARD ERECTION

TITLE:- STANDARD EARTHING DETAILS

Drawing No.:  
C/ENG/STD/EARTHINGS/09  
SHEET # 4

CKD BY PRPD BY Date



RELEASED FOR CONTRUCTION

EXTENSION OF 765/400KV S/S BARA TPS (U.P.)

PROJECT :- TECHNICAL SPECIFICATION-  
SWITCHYARD ERECTION

TITLE:- STANDARD EARTHING DETAILS

Drawing No.:  
C/ENG/STD/EARTHINGS/09  
SHEET # 5

CKD BY PRPD BY Date

*Specified*

[illegible]

Technical drawing of a 3000mm long earthing rod assembly. The drawing shows a cross-section of the assembly with dimensions and material specifications.

**Dimensions:**

- Overall length: 3000mm
- Overall width: 600mm
- Top flange width: 125mm
- Top cover thickness: 10mm
- Top cover area: 650Sq.
- Side flange width: 175mm
- Bottom flange width: 75mm
- Base width: 150mm
- Top cover height: 30mm
- Side flange height: 175mm
- Bottom flange height: 75mm
- Base height: 150mm
- Top cover height: 30mm
- Side flange height: 175mm
- Bottom flange height: 75mm
- Base height: 150mm

**Materials and Components:**

- CAST IRON COVER HINGED TO CAST IRON FRAME (AS PER IS : 3043)
- CEMENT CONCRETE 1:4:8
- WELD (Typ)
- 14mm $\varnothing$  HOLE (Typ)
- 40mm $\varnothing$  MS ROD MAIN EARTHING CONDUCTOR
- 40mm $\varnothing$  3M LONG M.S. ROD

**Other Labels:**

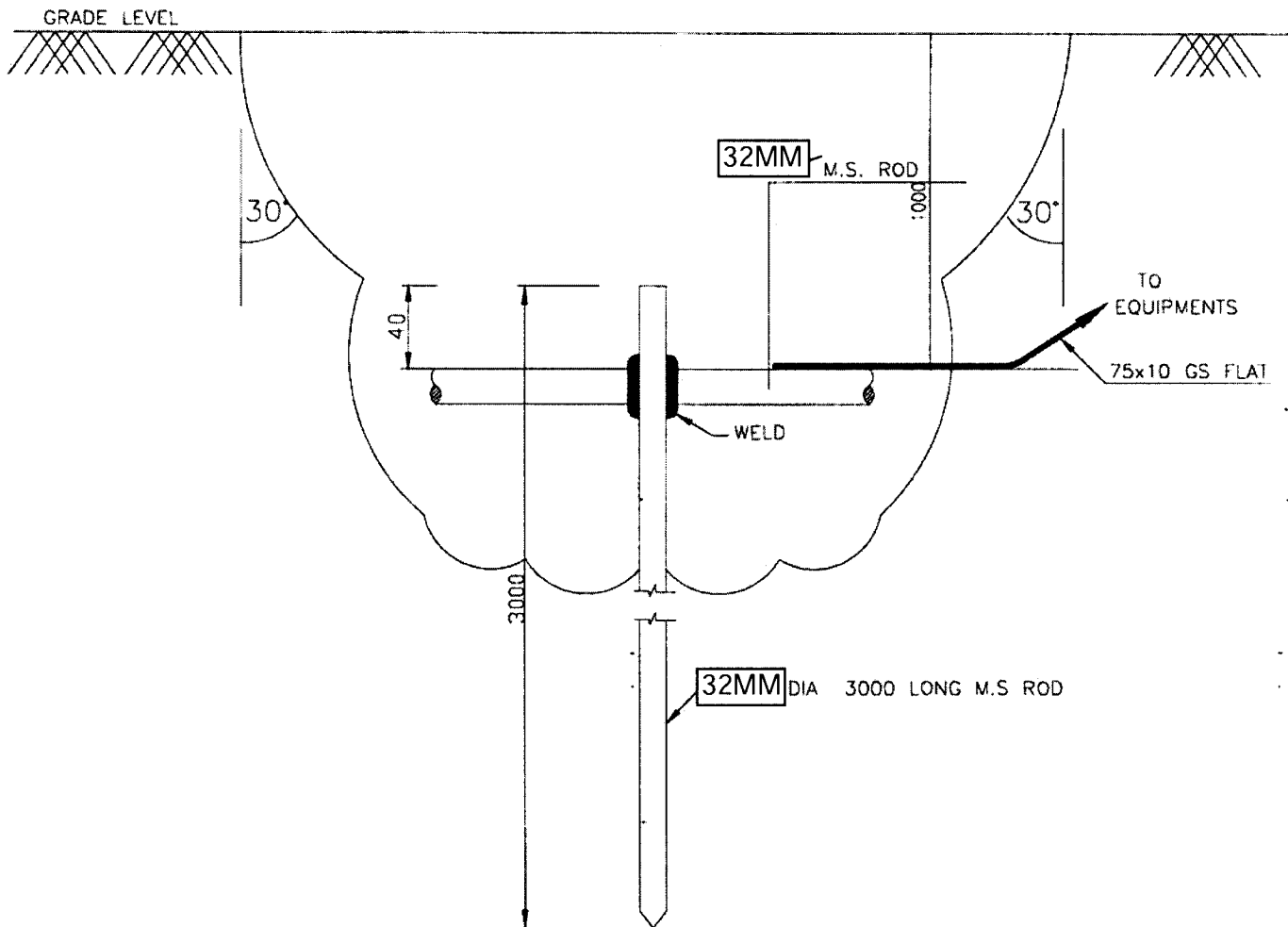
- FGL (Finished Ground Level)
- TO EQUIPMENT

RELEASED FOR CONSTRUCTION

TITLE:- STANDARD EARTHING DETAILS

Drawing No.:  
C/ENG/STD/EARTHINGS/09  
SHEET # 6

CKD BY	PRPD BY	Date
--------	---------	------



*Michael*

NOTES:-

1. TO BE USED FOR CONNECTING NEUTRAL OF CVT & SURGE MONITOR OF LA TO MAIN EARTHMAT.



EQUIPMENT EARTHING DETAILS  
ROD EARTH ELECTRODE WITHOUT TEST PIT

COMPU. DRG. REF.

DRG. No.

TB-4-377-316-010

REV. 00

SHEET No.  
11

*Michael*

*28/09/18*